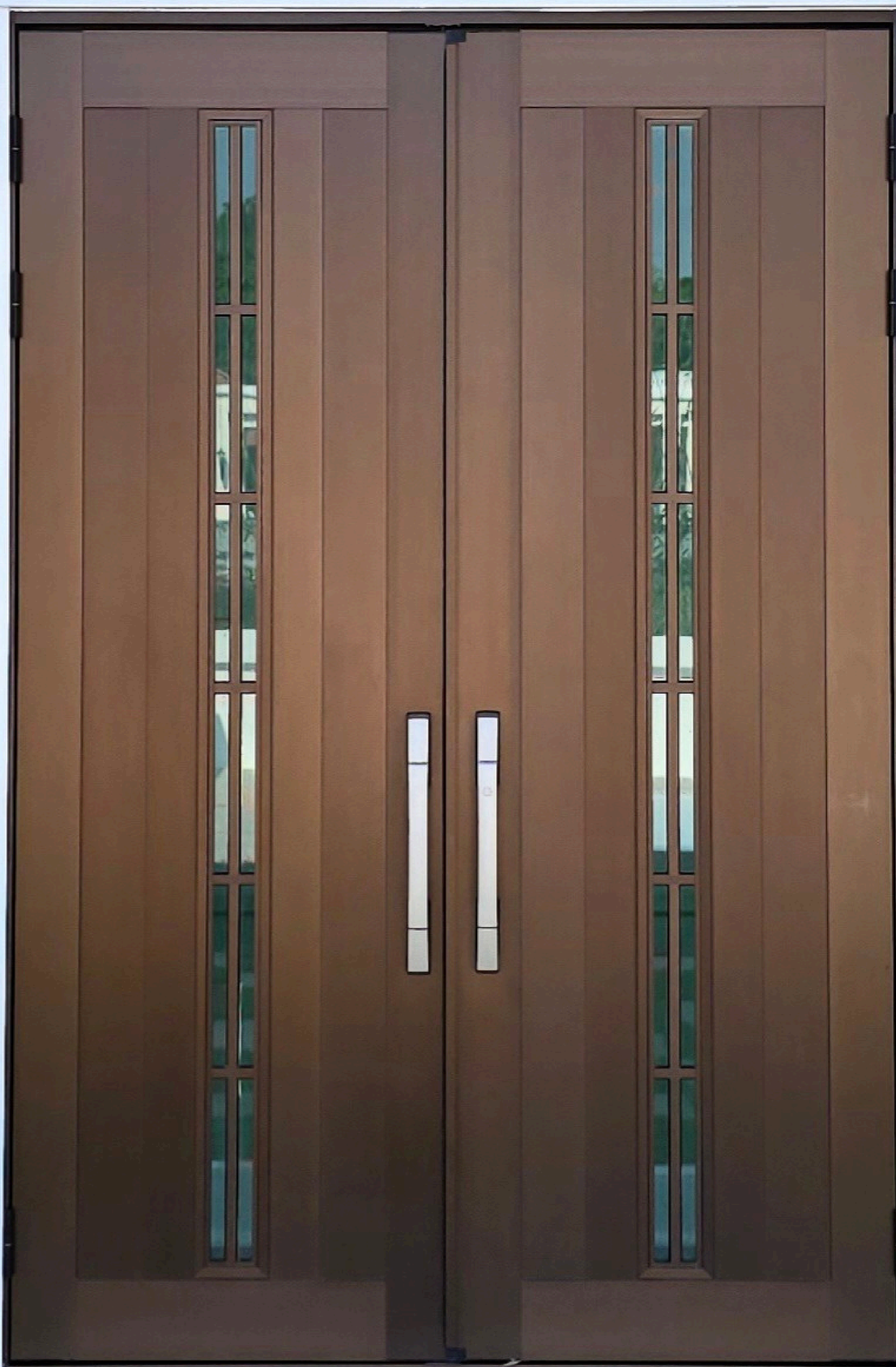


EXHIDO™

Excellent High Performance Entrance Door

**YKK
ap®**



EXHIDO™



Height
1,800-3,000 mm

Width
400-1,100 mm

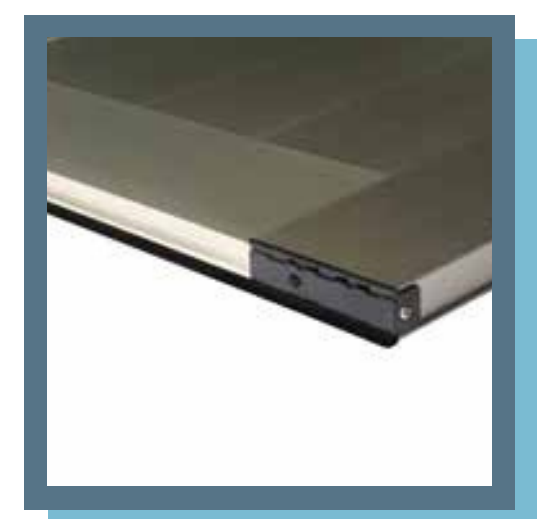
- Maximum height 3,000 mm and width 1,100 mm
- Made from international standard aluminium of architectural building materials
- Free from termites, water leakage and decay problems
- 8 mm glass can be used
- Foam sheet inside panels are enhanced sound reduction and give solid strong panel.

Air tightness material are used at the bottom rail prevent water and insects from entering.

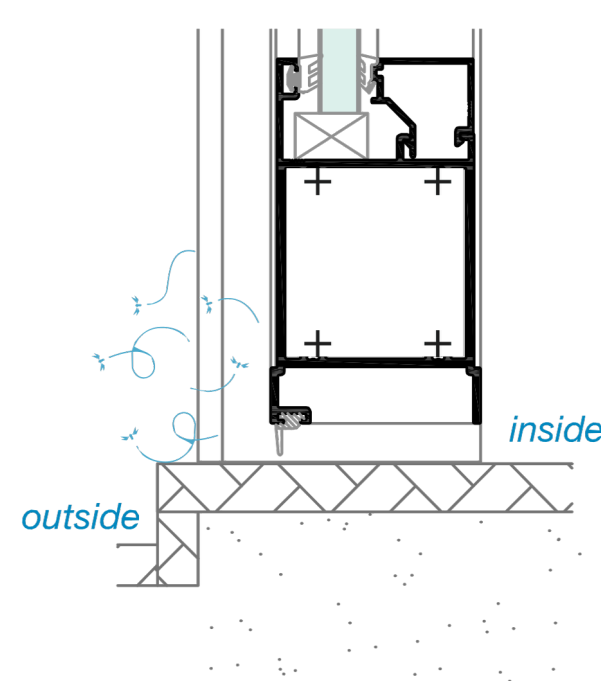
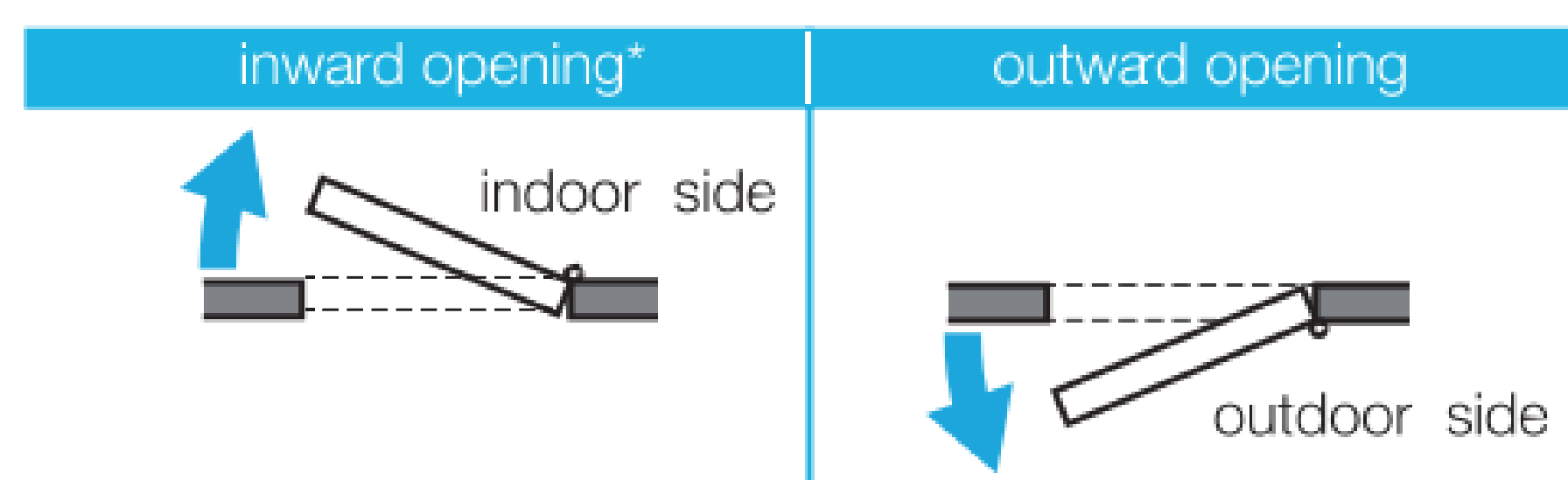


Rust proof aluminium hinges which passed 200,000 cycles endurance test (open-close).

Corner caps are applied to all corners of the door leaf for maximum security during operation.

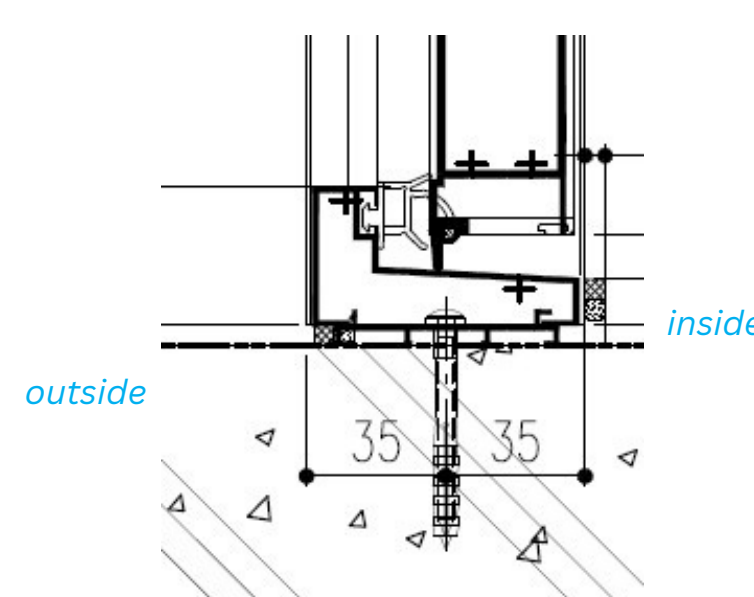


You can choose inward or outward opening door with high performance of Bottom Sill such as water tightness, air infiltration, sound insulation, prevent insect and dust.



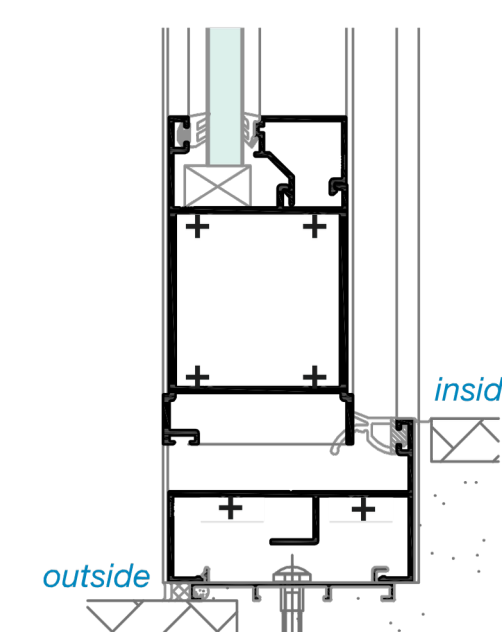
Inswing without Bottom Sill

*No water leakage warranty



Inswing with Bottom Sill

*No water leakage warranty



Outswing with Bottom Sill

EXHIDO™

You can choose various colors and design of aluminium doors with combination of lattice and glass.



Slit Panel Design



Slit Glazing Design



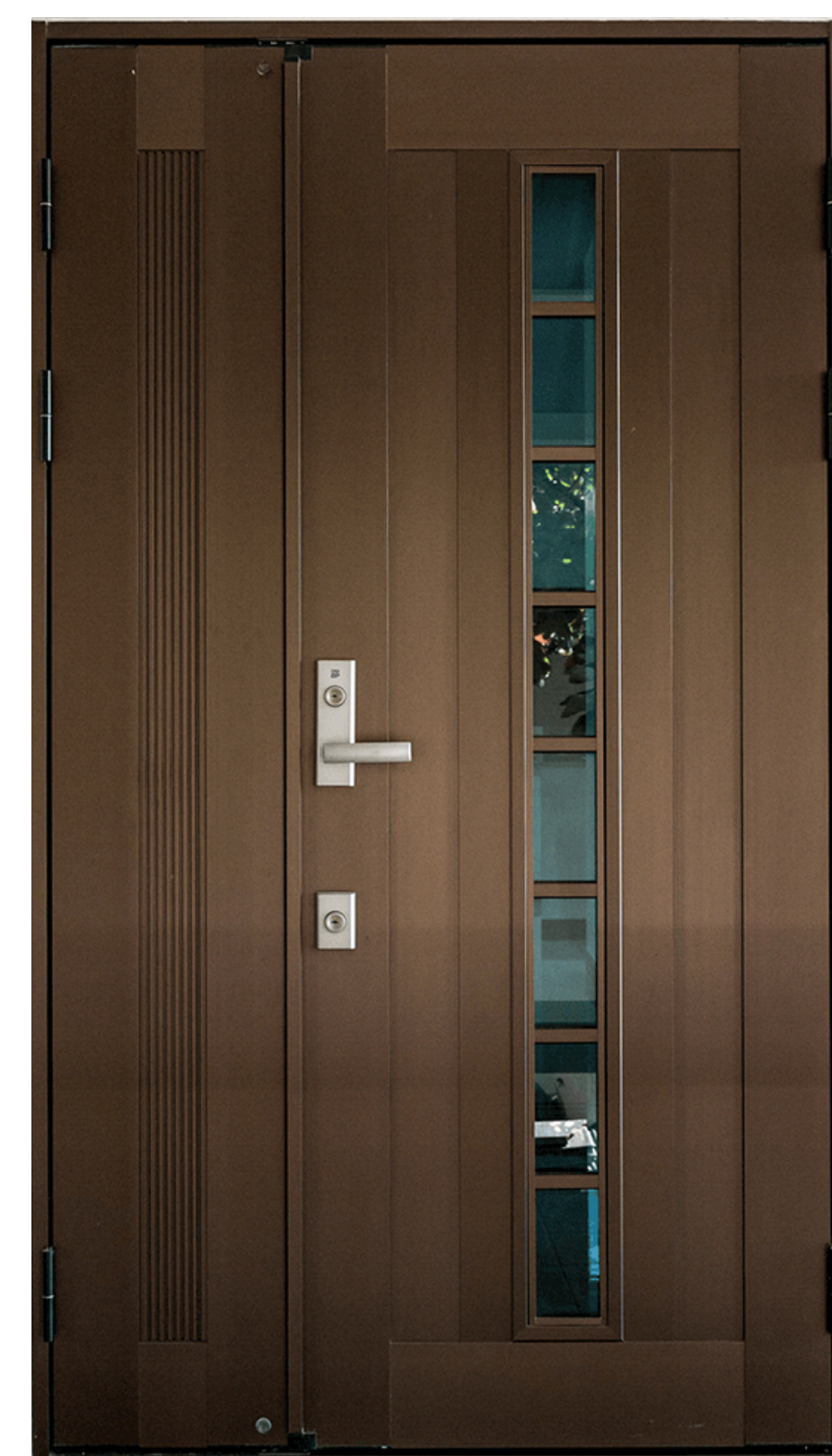
Slit Glazing with Lattice Design



Single Door



Double Door



Master & Slave Door

Color Sample

Anodize



YS1N Matte Silver



YH1N Light Champagne



YH3N Deep Champagne Gold



YB1C Glossy Brown



YB1N Matte Brown

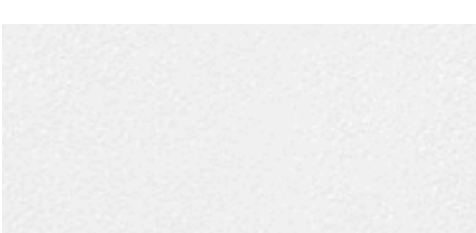


YB5N Red Black

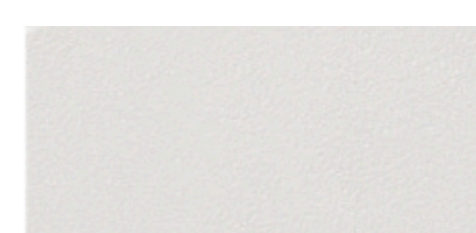


YK1N Matte Black

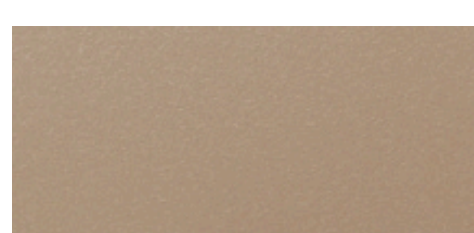
Powder Coat



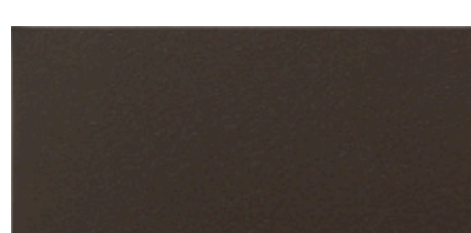
TW02 Snow White



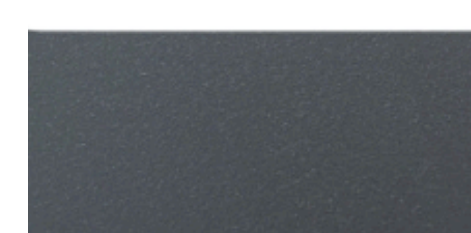
TT18 Sea Shell (Off White)



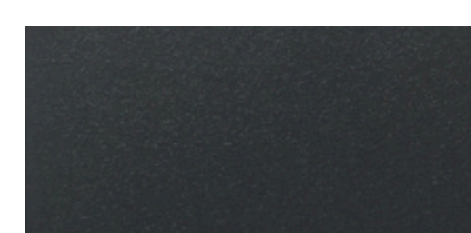
TT06 Champagne Gold



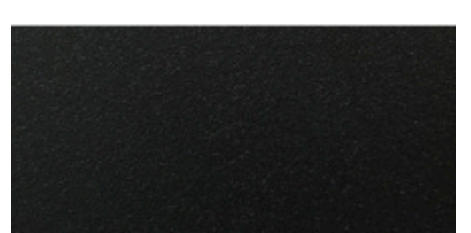
TT16 Autumn Brown



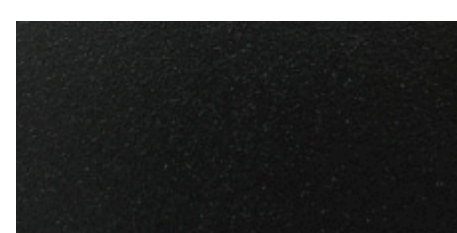
TT10 Dusty Grey



TB80 Charcoal Grey



TK10 Onyx



TT03 Black Space

EXHIDO™

Standard Hardware

Double locking system

Keyhole made of phosphorescent nylon with user friendly design and could glow in the dark



Optional Hardware



Door Closer



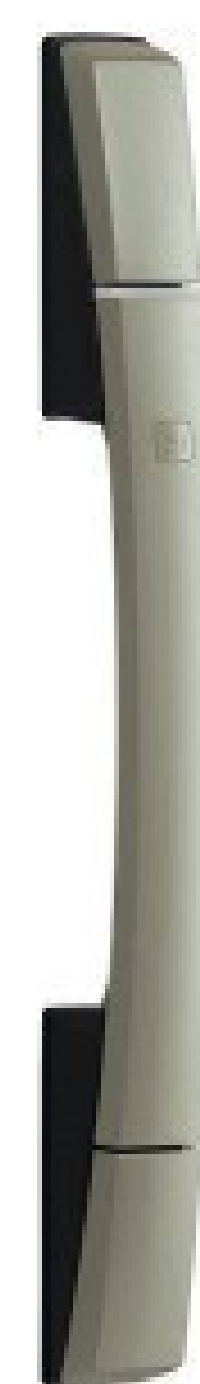
Door Guard

Digital Door Lock (optional)

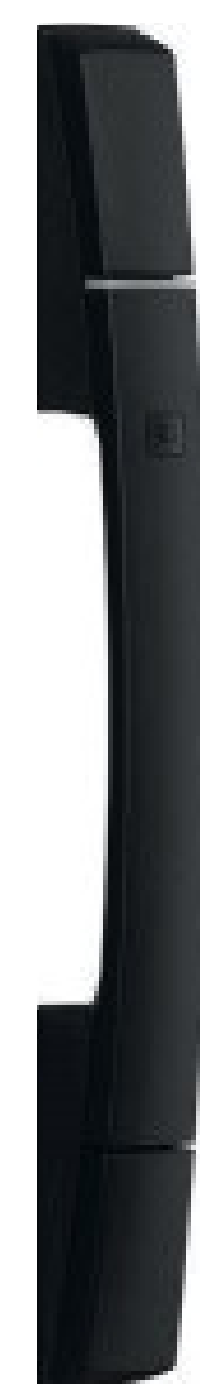
Digital Door Lock : Product of Alpha Japan

Handle and lock integrated with simple yet sophisticated design. The handle has a bold arching design that emphasises the sharp look.

During the Locking or Unlocking action , the slit on the handle emits a LED light to perfect its beautiful design.



Silver

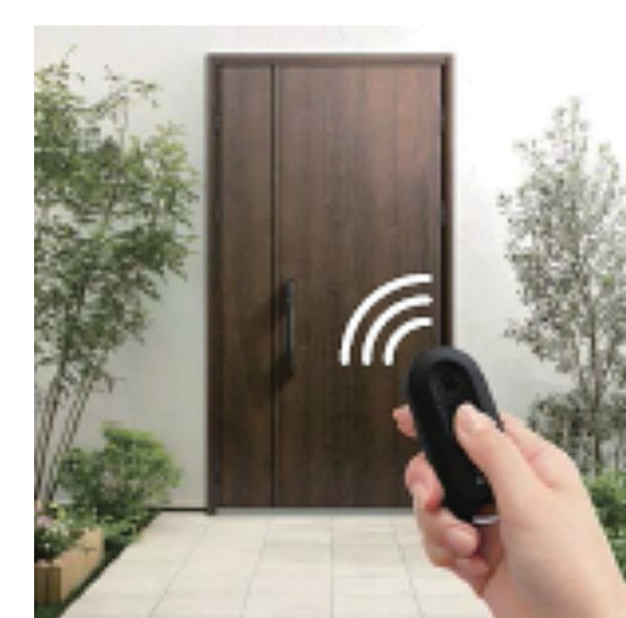


Black



Pocket Key (2 pieces)

By having "Pocket Key" with you, the lock can be done or undone by pressing the button on the handle. It can also be used as a remote control.



Tag Key (3 pieces)

A "Tag Key" has a key built-in when power failure. It could open to use a key.





YKK AP THAILAND SHOWROOM

55 Wave Place building, 13th floor,
Unit 1303, Wireless Rd., Lumpini,
Pathumwan, Bangkok, 10330
(BTS Ploen Chit Exit 5)



YKK AP Thailand



@ykkapth



<https://ykkap.co.th>



02-655-6334